

Accuracii ML HD



DUAL CHANNEL THERMAL & VISIBLE CAMERA SYSTEM



Accuracii ML HD is a powerful day and night, multi-sensor, dual-head observation system, especially developed for security applications. It allows mid-range detection and observation using state-of-the-art thermal technology.

Vumii's Accuracii ML HD thermal head features a variety of motorized Continuous Zoom, Dual Field of View, or fixed thermal lenses. The visible head is equipped with a FHD color CMOS camera.

Accuracii ML HD is ideal for both the detection and threats assessment. Accuracii ML HD is ruggedized to withstand the harshest weather and environmental conditions, including rain, direct sunlight, high humidity and dust.

FEATURES

KEY BENEFITS

- **High Image Quality**
Independent thermal and HD color cameras provide maximum situational awareness and threat assessment.
- **Innovative Features**
Unique image processing and enhanced contrast for video analytics systems.
- **Advanced Optics**
Continuous zoom, dual field of view, motorized, and autofocus lenses.
- **Rugged Design**
Designed and certified to IP66, hot, cold, dusty, and other harsh environments.
- **Easy Installation**
Serial or TCP/IP configurations. Pelco D or ONVIF Profile S Compliant.

AVAILABLE CONFIGURATIONS

Thermal

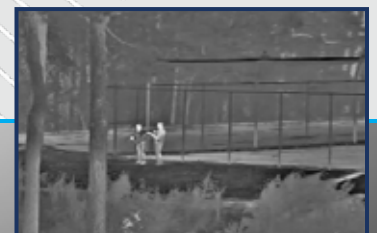
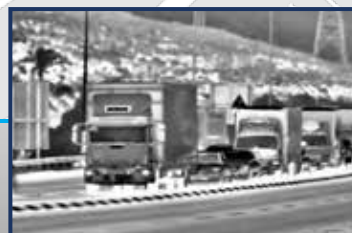
- Imager
640 x 480 17 μ
- Digital zoom up to x12
- Lenses:
26-105 Continuous Zoom
25-150 Continuous Zoom
45/135 Dual Field of View
100mm Athermal
- Choice of POE or 24VAC

Visible

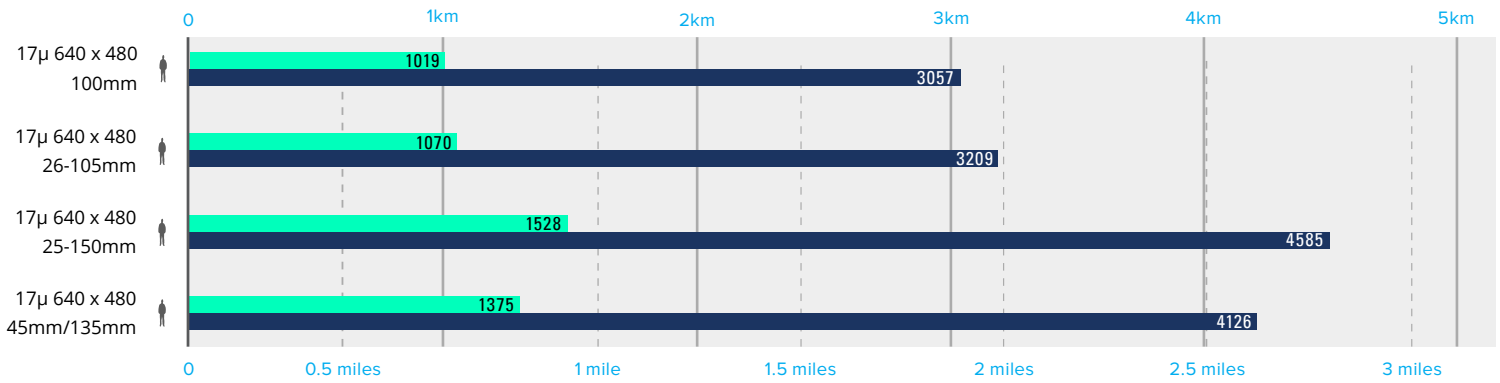
- Imager
1/2.8" Color CMOS Camera
- FHD Resolution
- Continuous Zoom Optics
4.4-132mm
- Image Stabilization
- Infrared Cut Filter

Video Output

- H.264, MJPEG, Analog (optional)



Accuracii ML HD Camera Performance



= Human Subject
Size 1.8m x 0.6m

Recognition
Detection

6 lines on subject
2 lines on subject

* Performance dependent on atmospheric conditions

Imaging Characteristics	Thermal Channel				Day Channel
Imager Type	Uncooled Microbolometer 7.5-14μ				1/2.8" Color CMOS
Resolution	640x480 17μ				1920x1080
NETD	NETD: <50°mK or Vox <35°mK				S/N Ratio: >50dB
Video Output	IP Stream (H.264, MJPEG), NTSC / PAL				
Lens Options	Athermalized 100mm	Continuous Zoom 26-105mm	Continuous Zoom 25-150mm	Dual Field of View 45/135mm	Continuous Zoom 4.4-132mm (30x)
Horizontal Field of View	6.2°	23.6° - 5.9°	25.3° / 4.1°	14.3° / 4.6°	63.4° - 2.1°
Electro-Mechanical Characteristics					
Unit Dimensions	309.8mm (h) x 553.7mm (w) x 355.6 mm (d) 12.1" (h) x 21.8" (w) x 14" (d)				
Unit Weight	20kg (44lbs)				
Environmental Rating	IP66				
Certifications	CE, FCC				
Power Input	POE++ or 24VAC				
Power Consumption	30w typical; 60w max				
Operating Temperature	-30° to +60°C (-40° to +140°F)				
Control Characteristics					
Communication Protocol	Pelco D, ONVIF Profile S				
Control Connection	Serial: RS422/RS485 (4-wire) or TCP/IP				
Control Type	Serial or TCP/IP				
PTZ Characteristics					
Accuracy	+/- 0.05°				
Pan Range	360° Continuous				
Tilt Range	360°				
Pan Speed	0.1°- 45°/sec max				
Preset Speed	120°/sec				
Presets	Up to 256				

* Some countries may be subject to thermal camera export licensing requirements.